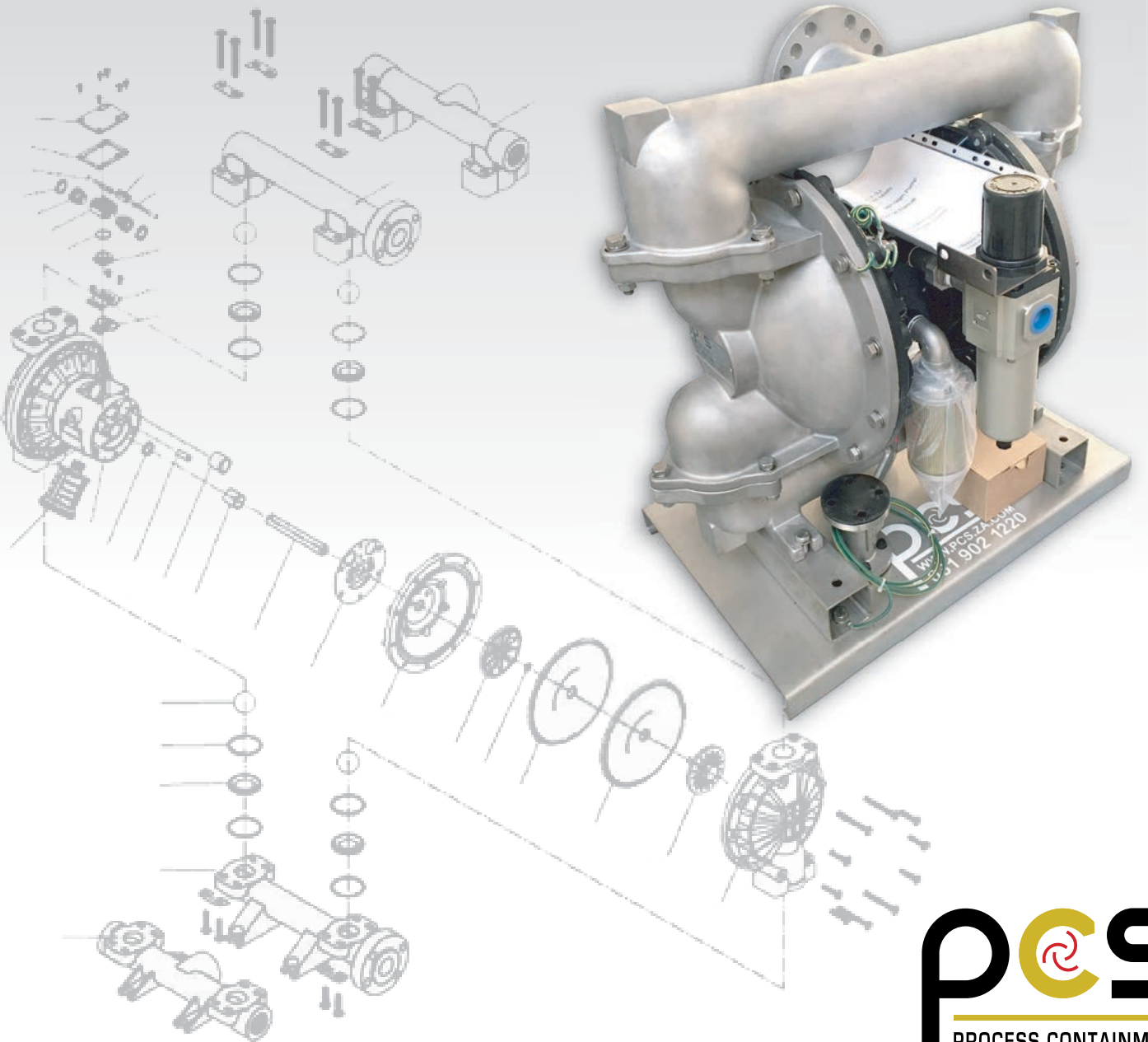


# TITAN

A PCS BRAND  
DIAPHRAGM PUMPS



**PCS**  
PROCESS CONTAINMENT  
SOLUTIONS PTY LTD.

MARCH 2020



# PCS TITAN

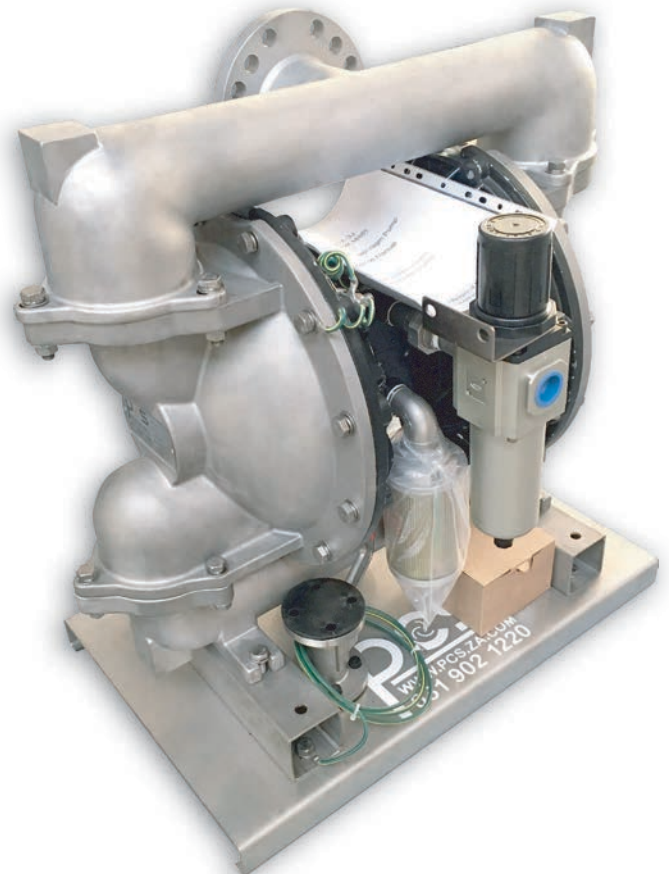
## DIAPHRAGM PUMPS

### **DIAPHRAGM PUMPS**

PCS TITAN pumps are commonly used in industries where pumps would be required to operate without an operators continued attention, where there is a very real chance that the pump can run dry or where the air pump will need to handle sludge and slurries. The simple and safe operation of air operated double diaphragm pumps with pneumatic control means that this pump is ideal for operating in zone one areas where there is a demand for intrinsically safe operation. The pump is simply turned on or off by either closing the fluid discharge valve anywhere on the discharge line or by regulating the air supply.

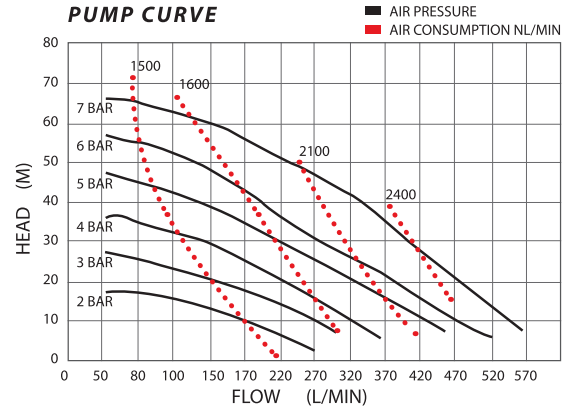
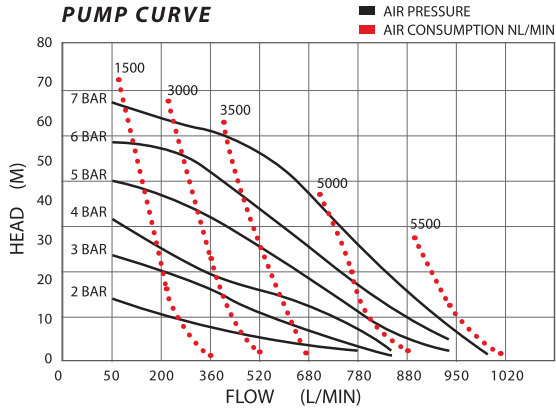
Features of Diaphragm pumps:

- Can run dry, without flow, for considerable periods of time without damage.
- Have good suction lift characteristics, typically up to 8 or even 9 meters at sea level.
- Excellent dry priming capability diaphragm pumps are capable of priming themselves from a dry start.
- Handle sludge and slurries with a relatively high amount of grit and solid content.
- Handle highly viscous liquids. A viscosity correction chart can be used as a tool to help prevent under-sizing AODD pumps.
- Available for industrial, chemical and hygienic applications from Stainless Steel to Polypropylene pumps, PCS covers all your pump needs.



# PCS TITAN

## DIAPHRAGM PUMPS



**PCS TITAN** TDNP - A - XX

MAX WORKING PRES.	7 BAR
MAX FLOW RATE	1020 L/MIN
MAX CYCLES DRY	135 CPM
MAX CYCLES WET	98 CPM
MAX SUCTION LIFT (DRY)	5 M
MAX SOLIDS	10 MM
MAX AIR CONSUM.	325 SCFM
AIR INLET SIZE	3/4" BSP F
AIR OUTLET SIZE	1" BSP F
FLUID INLET SIZE	3" NPT F/ BSP F
FLUID OUTLET SIZE	3" NPT F/ BSP F
WEIGHT ALUM.	88 KG

**PCS TITAN** TDNP - B - XX

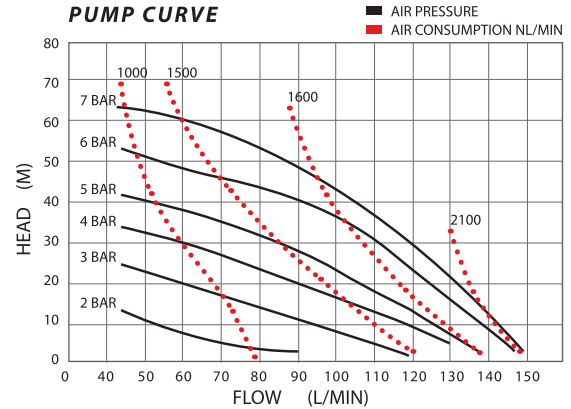
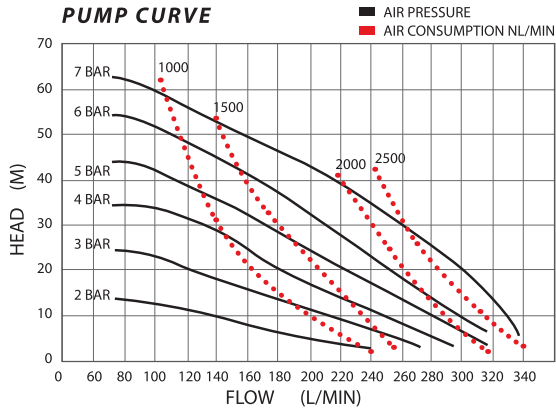
MAX WORKING PRES.	7 BAR
MAX FLOW RATE	570 L/MIN
MAX CYCLES DRY	145 C/MIN
MAX CYCLES WET	120 C/MIN
MAX SUCTION LIFT	5 M
MAX SOLIDS	6 MM
MAX AIR CONSUM.	175 SCFM
AIR INLET SIZE	1/2" BSP F
AIR OUTLET SIZE	3/4" BSP F
FLUID INLET SIZE	2" NPT F/ BSP F
FLUID OUTLET SIZE	2" NPT F/ BSP F
WEIGHT ALUM.	29 KG S/S 47 KG



EMAIL: [INFO@PCS.ZA.COM](mailto:INFO@PCS.ZA.COM)  
[WWW.PCS.ZA.COM](http://WWW.PCS.ZA.COM)

# PCS TITAN

## DIAPHRAGM PUMPS



### PCS TITAN TDNP - C - XX

MAX WORKING PRES.	7 BAR
MAX FLOW RATE	340 L/MIN
MAX CYCLES DRY	200 CPM
MAX CYCLES WET	120 CPM
MAX SUCTION LIFT	5 M
MAX SOLIDS	5 MM
MAX AIR CONSUM.	128 SCFM
AIR INLET SIZE	1/2" BSP F
AIR OUTLET SIZE	3/4" BSP F
FLUID INLET SIZE	1 1/2" NPT F/ BSP F
FLUID OUTLET SIZE	1 1/2" NPT F/ BSP F
WEIGHT	PP 16 KG PVDF 20 KG

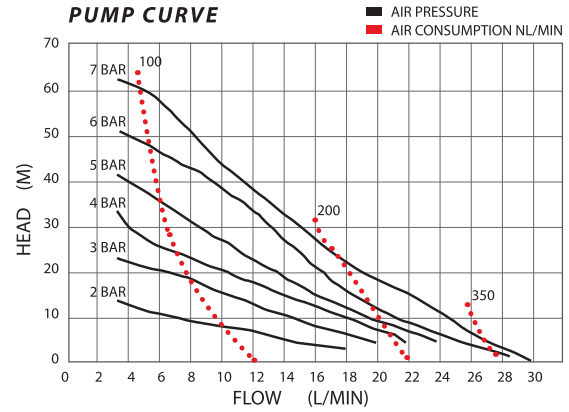
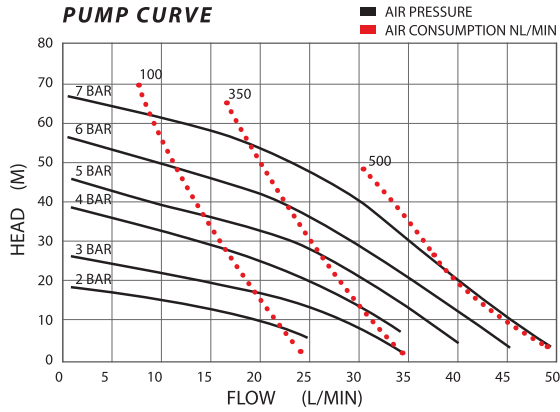
### PCS TITAN TDNP - D - XX

MAX WORKING PRES.	7 BAR
MAX FLOW RATE	150 L/MIN
MAX CYCLES DRY	276 CPM
MAX CYCLES WET	200 CPM
MAX SUCTION LIFT (DRY)	5 M
MAX SOLIDS	4 MM
MAX AIR CONSUM.	60 SCFM
AIR INLET SIZE	1/2" BSP F
AIR OUTLET SIZE	3/4" BSP F
FLUID INLET SIZE	1" NPT F/ BSP F
FLUID OUTLET SIZE	1" NPT F/ BSP F
WEIGHT	PP 8,2 KG PVDF 10,2 KG



# PCS TITAN

## DIAPHRAGM PUMPS



### PCS TITAN TDNP - E/F - XX

MAX WORKING PRES.	7 BAR
MAX FLOW RATE	50 L/MIN
MAX CYCLES DRY	400 CPM
MAX CYCLES WET	310 CPM
MAX SUCTION LIFT	4 M
MAX SOLIDS	2,5 MM
MAX AIR CONSUM.	28 SCFM
AIR INLET SIZE	1/4" BSP F
AIR OUTLET SIZE	3/8" BSP F
FLUID INLET SIZE	1/2" & 3/4" NPT F/ BSP F
FLUID OUTLET SIZE	1/2" & 3/4" NPT F/ BSP F
WEIGHT	PP 2,7 KG PVDF 3,7 KG

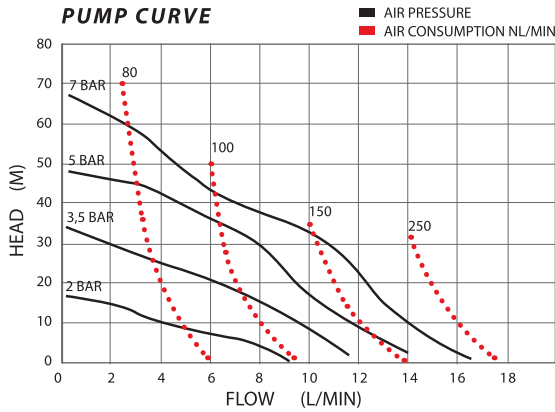
### PCS TITAN TDNP - G - XX

MAX WORKING PRES.	7 BAR
MAX FLOW RATE	26 L/MIN
MAX CYCLES DRY	330 C/MIN
MAX CYCLES WET	280 C/MIN
MAX SUCTION LIFT	3 M
MAX SOLIDS	1,6 MM
MAX AIR CONSUM.	9 SCFM
AIR INLET SIZE	1/4" BSP F
AIR OUTLET SIZE	1/4" BSP F
FLUID INLET SIZE	3/8" NPT F/ BSP F
FLUID OUTLET SIZE	3/8" NPT F/ BSP F
WEIGHT	PP 2,5 KG ALUM. 3,9 KG



# PCS TITAN

## DIAPHRAGM PUMPS



**PCS TITAN** TDNP - H - XX

MAX WORKING PRES.	7 BAR
MAX FLOW RATE	17 L/MIN
MAX CYCLES DRY	320 CPM
MAX CYCLES WET	250 CPM
MAX SUCTION LIFT (DRY)	3 M
MAX SOLIDS	0,5 MM
MAX AIR CONSUM.	9 SCFM
AIR INLET SIZE	1/4" BSP F
AIR OUTLET SIZE	1/4" BSP F
FLUID INLET SIZE	1/4" NPT F/ BSP F
FLUID OUTLET SIZE	1/4" NPT F/ BSP F
WEIGHT	1,1 KG



### 1ST 4 DIGITS XXXX-X-XX-X COMPONENT

PUMPS	=	TDNP
ACCESSORIES	=	TDPA
SPARES	=	TDPS

### 5TH DIGIT XXXX-X-XX-X SIZE

SIZES	CODE
3"	A
2"	B
1-1/2"	C
1"	D
3/4"	E
1/2"	F
3/8"	G
1/4"	H

### 6TH DIGIT XXXX-X-XX-X BODY MATERIAL

BODY	CODE
POLYPROP	1
ALUMINIUM	2
STAINLESS	3
SPECIAL	X

### 7TH DIGIT XXXX-X-XX-X PARTS MATERIAL

PARTS	CODE
PTFE	G
HYTREL	I
SANTOPRENE	J
SPECIAL	Y

### 8TH DIGIT XXXX-X-XX-X CONNECTION TYPE

CONNECTION	CODE
SCREWED	S
FLANGE	F

EG. 2" FLANGED PUMP WITH ALUMINIUM BODY & SANTOPRENE DIAPHRAGM = **TDNP-B-2J-F**

# PCS TITAN

## DIAPHRAGM PUMPS

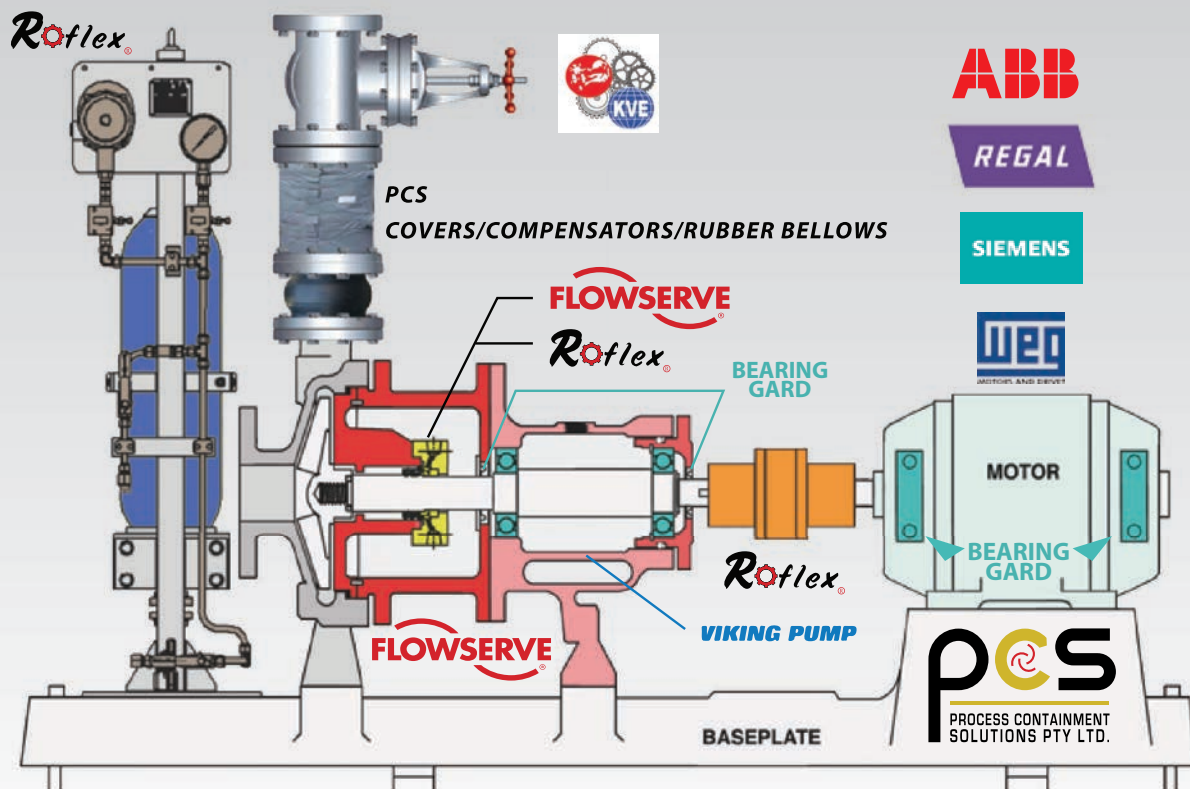
CUSTOMER:		ORDER DATE:	
TAG/ITEM NO.:		Job No.:	
INTERNAL REP :		ENG. SALES REP:	
DATE RECD. W/Shop / /		PCS REF No.:	
CUSTOMER REF:	DATE REQ. BY CUSTOMER:		.
<b>REASON FOR REPAIR / OVERHAUL:</b>			
<input type="radio"/> AIR REGULATOR	<input type="radio"/> PERFORMANCE LOSS	<input type="radio"/> SIZE ISSUE	<input type="radio"/> EXCESSIVE NOISE
<input type="radio"/> NON UNIFORM STROKE	<input type="radio"/> LEAKING	<input type="radio"/> CONDITION MONITORING	<input type="radio"/> OTHER _____
<b>EQUIPMENT DATA</b>			
EQUIPMENT MAKE:	MARK PROBLIME AREAS BELOW		
EQUIPMENT SIZE:			
EQUIPMENT MODEL:			
EQUIPMENT TAG NO:			
OP AIR PRESSURE (BAR)			
PRODUCT ITEM:			
HOURS OF OPERATION:			
REASON FOR STRIP INSPECTION:			
FLUID PUMPED:			
FLUID TEMP:			
DISCHARGE PRESS:			
SUCTION PRESS:			
VISCOSITY:			
DIAPHRAGM MATERIAL:			
NO MISSING PARTS:	YES:	NO:	COMMENTS:
<b>FINDINGS AFTER STRIP DOWN:</b>			
<b>RECOMMENDED ACTION:</b>			
REPORT BY:	DATE:	SIGN:	



# PCS TITAN

## DIAPHRAGM PUMPS

OTHER PCS BRANDS



### CAPE TOWN

POST NET SUITE 378  
PRIVATE BAG X15  
SOMERSET WEST  
WESTERN CAPE, 7129  
TEL: +27 (0)21 851 9264

### DURBAN

19A THE AVENUE EAST  
UNIT 1-3 HILBRON PARK  
PROSPECTON  
DURBAN, 4133  
TEL: +27 (0)31 902 1220

### RICHARDS BAY

17 PIPITS PRIDE COMPLEX  
RICHARDS BAY, 3900  
TEL: +27 (0)66 248 1989

### JOHANNESBURG

1 DERICK COETZEE ROAD  
(CNR KELLY ROAD)  
JETPARK, 1459  
TEL: +27 (0)10 442 5798  
OR +27 (0)87 057 5446