

PCS TITAN

DIN 24255 SINGLE STAGE CENTRIFUGAL PUMPS

CENTRIFUGAL PUMPS

PCS TITAN DIN 24255 single stage centrifugal pumps are manufactured to European dimensional and operational specifications.

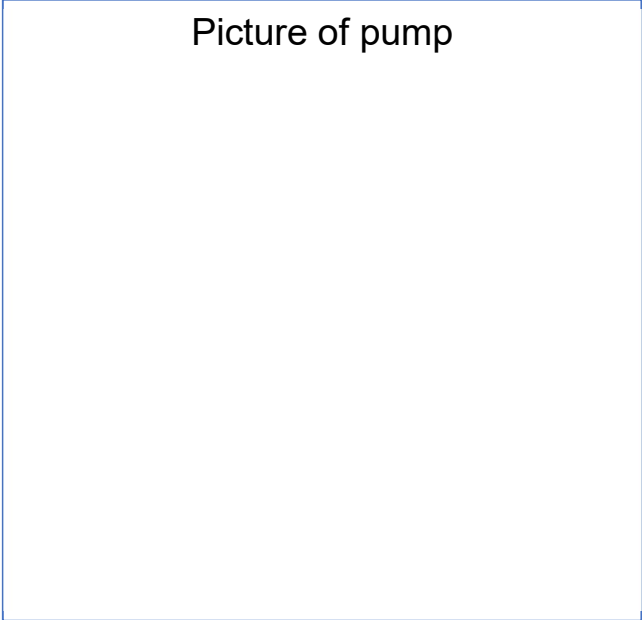
The international specification also ensures an affordable product without the compromise in quality.

Pump Design

PCS TITAN DIN pumps are available in bare shaft and close coupled configurations.

Sealing options include packed gland, component or cartridge seals.

The standardization of the footprint allows for the change out of competitor pumps without major modifications to pump bases or pipework.



Product coding:

E.g. DINB 80 - 26 - 240 – CCMSO

<i>Pump Type</i>	<i>Discharge diameter</i>	<i>Impeller size</i>	<i>Machined Impeller size</i>	<i>Materials of construction</i>
<i>B – bare shaft</i>	<i>(mm)</i>	<i>x 10mm</i>	<i>mm</i>	<i>1st Volute, Back plate and bearing assembly</i>
<i>C- Close Coupled</i>				<i>2nd Impeller</i>
				<i>3rd Shaft</i>
				<i>4th Sealing configuration</i>
				<i>5th Optional for special requirements</i>

Materials of Construction

Part Name	Material
Volute, back plate	Std: Cast Iron
	Optional: Cast S/Steel
Impeller	Std: Cast Iron
	Optional: Bronze / S/Steel
Shaft	Std: Mild Steel
	Optional: 304 S/Steel
Shaft Sleeve	304/316 S/Steel
Bearing assembly	Cast Iron
Gland Packing	graphite
Mechanical seal	Silicon vs Silicon, Viton
Bearings	Std: Sealed
	Optional: Oil lubricated

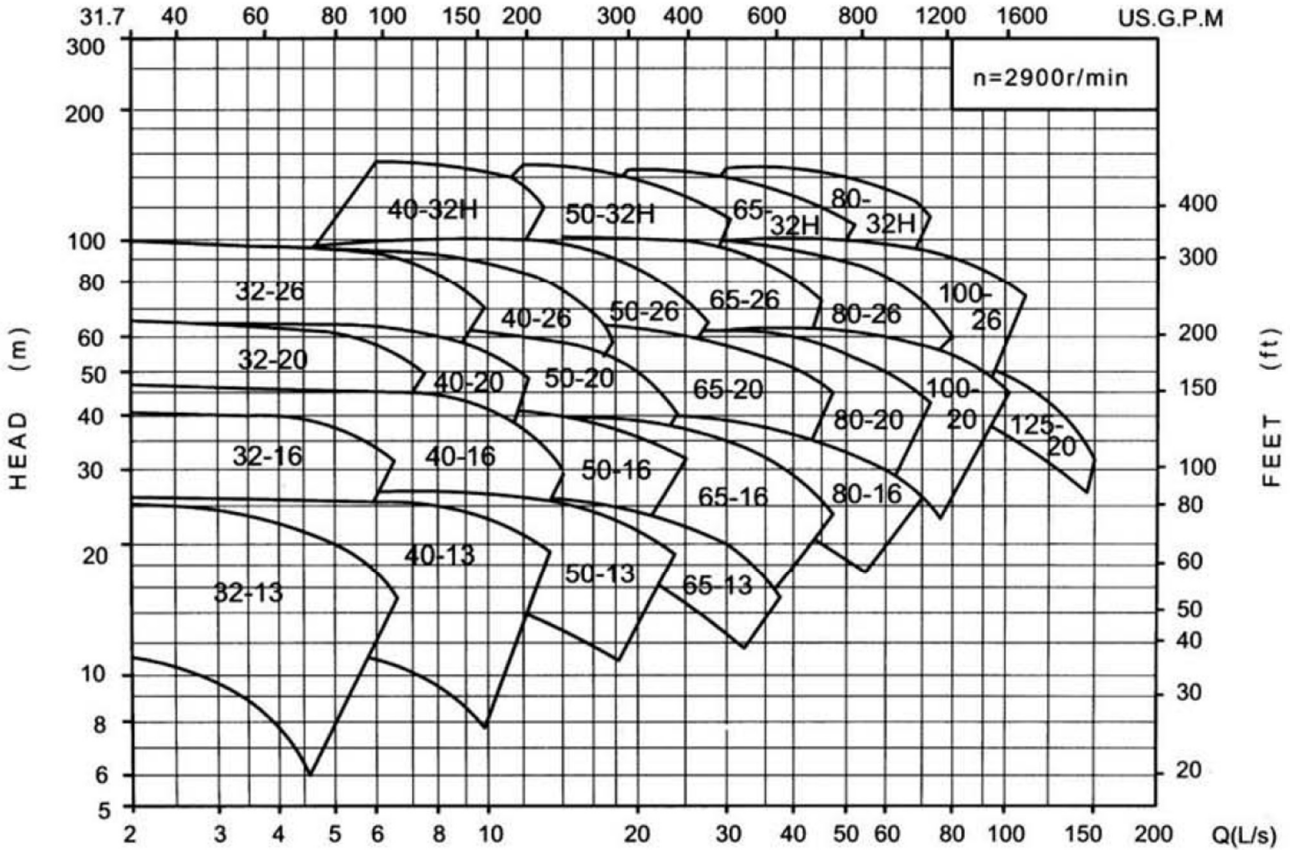
Material Codes:

- Letters 1-3*
- C – Cast Iron*
 - B – Bronze*
 - M – Mild Steel*
 - S – S/Steel*
- Letter 4*
- P – Packed gland*
 - S – Component seal*
 - C – Cartridge seal*
- Letter 5*
- 1 – std configuration*
 - O – oil lubricated bearings*
 - X – Engineered material selection for sealing components*



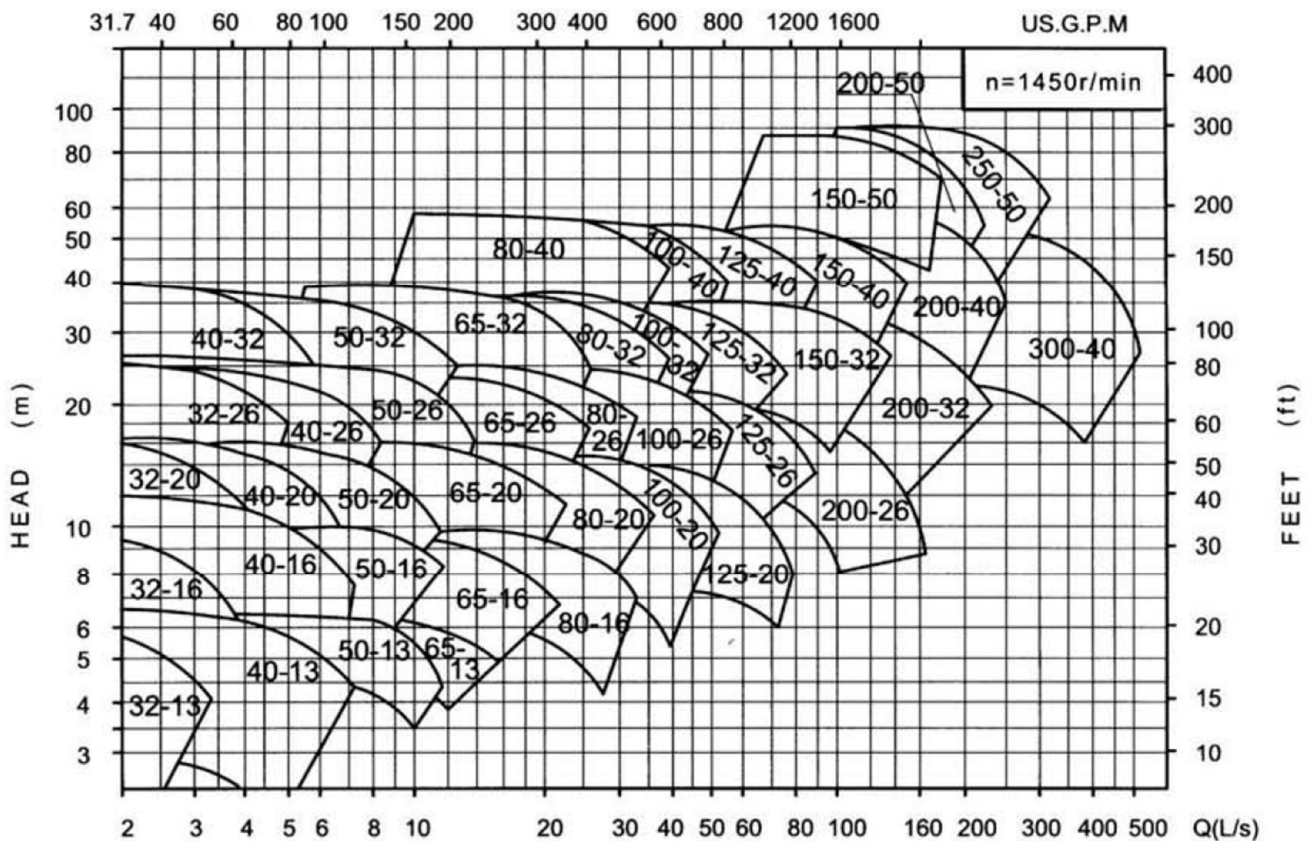
Pump Curves

$n=4$ pole, density 1000kg/m^3

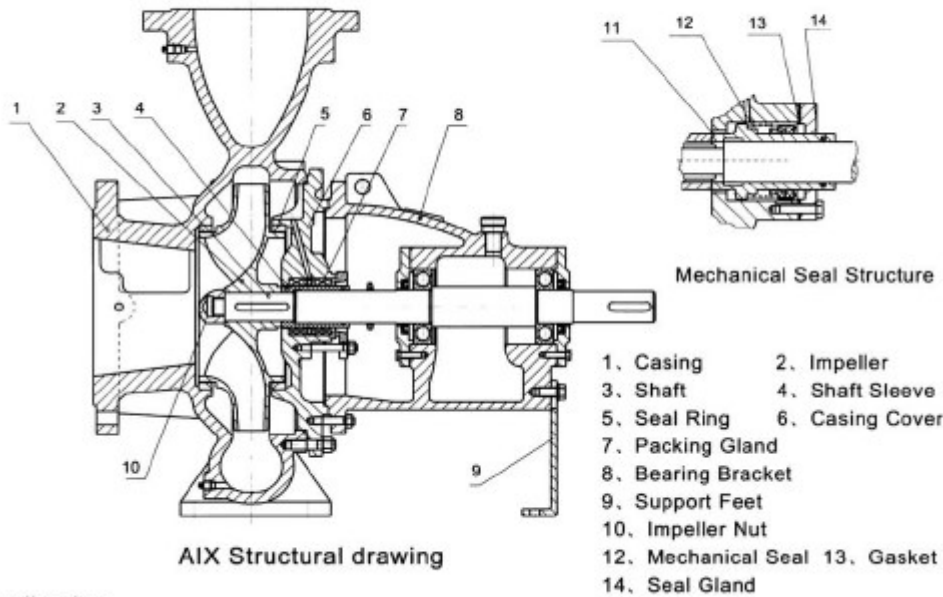


Pump Curves

$n=2$ pole, density 1000kg/m^3



Sectional drawing (This is not the table we will use for layout purposes only)



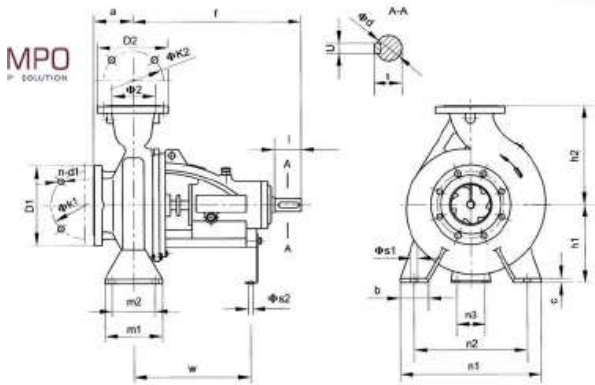
Application.

AIX series pump is often used to carry clean water or liquids whose

in the exploited process, our technician absorbed merits

Dimensional Table (This is not the table we will use for layout purposes only)

AIX Type	Shaft Dimensions	Pump Dimensions										Pump Foot Dimensions						Shaft Face				
		Φ1	Φ2	a	f	h1	h2	b	c	m1	m2	n1	n2	Φs1	n3	Φs2	w	d	l	t	u	
32/13	25	58	32	80	360	112	140	50	14	100	70	190	140	14	100	14	267	24	50	27	8	
32/16	25	50	32	80	360	132	160	50	14	100	70	240	190	14	100	14	267	24	50	27	8	
32/20	25	50	32	80	360	160	180	50	14	100	70	240	190	14	110	14	267	24	50	27	8	
32/26	25	50	32	100	360	180	225	65	14	125	95	320	250	14	110	14	267	24	50	27	8	
40/13	25	65	40	60	360	112	140	50	14	100	70	210	160	14	100	14	267	24	50	27	8	
40/16	25	65	40	60	360	132	160	50	14	100	70	240	190	14	100	14	267	24	50	27	8	
40/20	25	65	40	100	360	160	180	50	14	100	70	265	212	14	110	14	267	24	50	27	8	
40/26	25	65	40	100	360	180	225	65	14	125	95	320	250	14	110	14	267	24	50	27	8	
40/32	38	65	40	125	470	200	225	65	14	125	95	345	280	14	110	14	342	32	80	35	10	
50/13	25	65	50	100	360	132	160	50	14	100	70	240	190	14	100	14	267	24	50	27	8	
50/16	25	65	50	100	360	160	180	50	14	100	70	265	212	14	110	14	267	24	50	27	8	
50/20	25	65	50	100	360	160	200	50	14	100	70	265	212	14	110	14	267	24	50	27	8	
50/26	25	65	50	100	360	180	225	65	14	125	95	320	250	14	110	14	267	24	50	27	8	
50/26G	35A	65	50	100	454	180	225	65	14	125	95	320	250	14	110	14	327	32	80	35	10	
50/32	35	65	50	125	470	225	280	65	16	125	95	345	280	14	110	14	342	32	80	35	10	
65/13	25	80	65	100	360	160	180	65	14	125	95	280	212	14	110	14	267	24	50	27	8	
65/16	25	80	65	100	360	160	200	65	14	125	95	280	212	14	110	14	267	24	50	27	8	
65/20	25	80	65	100	360	180	225	65	14	125	95	320	250	14	110	14	267	24	50	27	8	
65/20G	35A	80	65	100	454	180	225	65	14	125	95	320	250	14	110	14	328	32	80	35	10	
65/26	35	80	65	100	470	200	250	80	16	160	120	360	280	17.5	110	14	342	32	80	35	10	
65/32	35	80	65	125	470	225	280	80	16	160	120	400	315	17.5	110	14	342	32	80	35	10	
80/16	25	100	80	125	360	180	225	65	14	125	95	320	250	14	110	14	267	24	50	27	8	
80/16G	35A	100	80	125	454	180	225	65	14	125	95	320	250	14	110	14	326	32	80	35	10	
80/20	35	100	80	125	360	160	250	65	14	125	95	345	280	14	110	14	342	32	80	35	10	
80/26	35	100	80	125	470	200	280	80	16	160	120	400	315	17.5	110	14	342	32	80	35	10	
80/32	35	100	80	125	470	250	315	80	16	160	120	400	315	17.5	110	14	342	32	80	35	10	
80/40	45	100	80	125	532	280	355	85	16	160	120	440	340	17.5	110	14	368	42	110	45	12	
100/20	35	125	100	125	470	200	280	80	16	160	120	360	280	17.5	110	14	342	32	80	35	10	
100/26	35	125	100	140	470	225	280	80	16	160	120	400	315	17.5	110	14	342	32	80	35	10	
100/26G	45A	125	100	140	520	225	280	80	16	160	120	400	315	17.5	110	14	363	42	110	45	12	
100/32	35	125	100	140	470	250	315	80	16	160	120	400	315	17.5	110	14	342	32	80	35	10	
100/40	45	125	100	140	530	280	355	100	18	200	150	500	400	23	110	14	370	42	110	45	12	
125/20	35	150	125	140	470	250	315	80	16	160	120	400	315	17.5	110	14	342	32	80	35	10	
125/26	35	150	125	140	470	250	355	80	16	160	120	400	315	17.5	110	14	342	32	80	35	10	
125/32	45	150	125	140	530	280	355	100	18	200	150	500	400	23	110	14	370	42	110	45	12	
125/40	45	150	125	140	530	315	400	100	18	200	150	500	400	23	110	14	370	42	110	45	12	
125/50	60	150	125	180	680	375	500	100	24	200	150	550	450	24	140	15	500	55	110	59	16	
150/20	35G	200	150	160	495	280	400	100	20	200	150	550	450	23	110	14	367	32	80	35	10	
150/26	45	200	150	160	530	250	355	100	18	200	150	450	350	27	140	23	534	70	140	75	20	
150/32	45	200	150	160	530	280	400	100	18	200	150	550	450	23	110	14	370	42	110	45	12	
150/40	45	200	150	160	530	315	450	100	18	200	150	550	450	23	110	14	370	42	110	45	12	
150/50	60	200	150	180	670	375	500	100	24	200	150	550	450	24	140	15	600	55	110	59	16	
200/26	45	250	200	180	546	280	400	100	25	200	150	550	450	26	110	15	389	42	110	45	12	
200/32	55	250	200	200	670	355	450	100	20	200	150	550	450	24	110	15	500	48	110	52	14	
200/40	55	250	200	200	670	355	500	100	20	200	150	550	450	24	110	15	500	48	110	52	14	
200/50	75	250	200	240	783	425	545	160	30	300	240	720	600	27	140	23	534	70	140	75	20	
250/50	75	300	250	240	783	425	545	160	30	300	240	720	600	27	140	23	534	70	140	75	20	
300/40	75	350	300	280	783	500	600	150	40	300	200	800	660	27	140	23	550	70	140	74.5	20	



Our Products:

CHEMICAL & PROCESS PUMP PACKAGES



Applications

- Complete range of products to suit your requirements
- Temperature range from -200°C to 450°C
- Selected for your specific applications
- Pressure range from vacuum to 200 bar
- Complete range of media pumped

AIR DIAPHRAGM PUMPS



- Full range Polyprop, aluminium and stainless-steel pumps
- Diaphragms in Teflon or Hytrel
- Available from 1/4" to 3"
- Solids up to 4mm
- Pressure range to 65m
- Flow range up to 150l/m

COMPONENT SEALS



Applications

- Full range of general industry seals to fit all standard pumps
- Available in Metric and Imperial sizes
- Temperature range from -40°C to 200°C
- Pressure range from vacuum to 20 bar
- Complete range of materials available

CARTRIDGE SEALS



- Complete range of products to suit your requirements
- Temperature range from -200°C to 450°C
- Selected for your specific applications
- Pressure range from vacuum to 200 bar
- Complete range of media pumped

VACUUM PUMPS



Applications

- Complete range of pumps to suit your requirements
- Selected for your specific applications 31
- Vacuum and compressor configuration
- Complete range of media pumped

VALVES



- Full range of general butterfly, ball, gate, globe, check and knife gate valves
- Full range of sizes available
- Complete range of materials available
- Manual, pneumatic and electrical operated
- Complete package offering

Contact us:

Durban

Tel: +27 (0)31 902-1220
19A The Avenue East
Unit 1-3 Hilbron Park
Prospecton,

Gauteng

Tel: +27(0)10 442 5798
1 Derick Coetzee Road
Jet Park

Richards Bay

Tel: +27(0)66 248 1989
17 Pipits Pride Complex
Richards Bay

W/Cape

Tel: +27(0)21 851-9264
Post Net Suite 378
Private Bag X15
Somerset West

